

Indian Botanic Garden Library
BOTANICAL SURVEY OF INDIA

CLASS No

BOOK No. STI-C

AC NO. B-10.125

*D'histoire naturelle de
la part de Jussieu & de Moench*



STIRPES CRYPTOGRAMMÆ

VOGESORHENANÆ;

QUAS

IN RHENI SUPERIORIS INFERIORISQUE, NEC NON
VOGESORUM PRAEFECTURIS

COLLEGERUNT

J, B. MOUGEOT Bruyeriensis Med. Doct. et C. NESTLER Argentinensis
Facult. Med. Argent. Botan. Prof.

— DEUS O. M. et natura nihil frustr* creaverit*
Posteris tamen lot invenluros fore n til kales tx muse is
uguror ^ quot er telitjuis vegetabilibus. —

Liun. Cui bono? Amotn. Acad. torn. III. p. il-

FASCICULUS VI

BRUYEKII Vogesorum. 1860.



STAMPED COPY

W. O. S. W. S. W. S. W. S.

1892

IN THE SUPPLEMENTARY LIBRARY, THE NEW

VOYAGEUR DE BANGALORE

COPIES

J. H. Moore, Director, Indian Botanic Garden, Calcutta

... ..

... ..



ROYAL BOTANIC GARDEN

V ^ ^

... ..

INDEX SISTEKS SPECIEBUM NOMINA FASCICUI[^]* VII¹.

Actynoiilyrium garainis Sch.u.Kun.NS (JSy.		Lycopodium annotinum Linn.	3V. ^o 601.
Agaric us androsaceus Pers.	67 7 *	Melnnconium Lettilijium Schm. u, Kuti.	670.
AspidinCQ montanum Swarts.	Cn>3.	Nostoc commune fauch*	700.
Asieroma Polygonal! De Condi	058.	Oi'ilioii iclmni llutcbiusix Hook.	618.
Asterosporium Iloflmanni Run.	66g.	Orthotrdium Ltidwigii Brid,	617.
Barbula ri»ida Hedifr*	613.	Orthotriclmm Lyellii Hook.	6101
Ban ram ia ithypliyila Brid.	633,	Ortbotrithnm obtusifolium Schrad.	616.
Barlramiu march ica Swarts.	623.	Opegrstpha atm Pers.	649.
Bryum amirogynum Hedw.	620.	Opegiaplia rubella Pers.	648.
Bryum cuspidatum Schreb.	621.	Parmelia Borreri Turn.	634.
Cuuoymyce sparassa Ficerke,	645.	Parmelia speciosa Achar.	635.
Cenomyce vertinflala Ftosrke.	644*	Pellidea polydadlja Acfmr-.	633*
Cfawtopliora endivinefolia Agardh.	699.	P<ziza Atropyp Pers.	686.
Ctavaria cornea Pers.	682.	IVziia terina Pers.	687.
Ctavaria obtusn Souerb.	683.	Piiascum axillare Dicks.	605.
Coftema scol'mum a. Achar,	63.	Vjascuni curvicollum Hedw.	606.
Couterva erirt'lorum et V, aqualir. Aga\.	694.	Polyriodium rheciturum frill.	603.
Coiifena uiiscici>li; ff'eb.et Muht.	6g5.	Pi)hJriiinciuu Trilolii Kun* u, Schm.	688.
Collierva rivnl:iiit3 Linn.	6&3.	"Piifcinia Buxi L)e Cand%	C76.
Conferva vilttlina fJi/tw.	61,0,	PucWnia grmninis Pers.	675.
Cornicularia trial is Achar.	646.	llamalina polymorplta -u. tinctoria Ach.	(iZ6.
Dicraimtu cervirulatum Ilcdw.	613.	ScteiDgLossum roiiiriuri Pers.	672.
Dicraium monlanum Hedw:	7i>1,	Scleroglossum lanceolatum Pers.	671.
Didymodon rigitlnlujn Jltidw.	(jia.	Scicroniiii nitidam Pers.	674.
Ectocarpus aureus Lyngb.	6<ja.	Stleroliim Ir^riflis Pers.	(i73.
Eucalypta cilfala Hbdw*	6ar).	Scytonenia orellatnm Ljngb.	691.
Fumago foliorum Pen.	6t)0.	Sislotretna violaceum Peril	6-8.
Geofjloasum Sphapiioruin Pers.	(iS.f.	Spbxria arrumuiata Pers.	665.
Gra^his scripts Achar.	650.	Sphsria Helienoides e, De Cand.	6G3.
Ciymnustomum fasciculare Ifmlw,	607.	Splia'ria Lirdla Pers.	668.
Gymnostomum mirrosinmum Hedw.	608.	Spli^ria macuhformis Pers,	661.
Hyrtiuni dirriorplnirij BricL	627.	Sphsrla padua Pers.	66.
Hypnum flnviatite Swart I.	625.	Spliaria jiuurrtifbrmis Pers*	
DypDura Halleri Linn.	626.	Spharria [iiiiitulata HoQ'nu	650>
Hypnum lyfopudiuides Bruh	628.	Spli^Tia Spartii ISees.	664-
Hyp 1 mm piJiferum Schreb.	624.	Sphceria Tilti< /flrj,	660.
Hysierium abietinum Pers.	656.	Sphapria trichina Pers.	6G6.
H^slerium aruudinacem Pers.	655.	Spitoma lumidulum Achar.	65i.
Hyslcrinni tnelaleucum Fries.	654-	Stereocauton iiamtm Achar.	647.
Juu^crmanna resupinata Linn.	631.	Struiiiioplcris ^ermapica Willd.	604.
Mwiifjprmaiiia Spria^ni Dicks.,	629.	Thelephora frustulata Pers.	C80.
Jm.-r-imxiiih stipulacea Hook.	63 s.	Tlipleliora Picea; Pers.	681.
Jwn^eimaimia umb'osa Schrad,	630.	Thelephora fjuprcina Pers.	679.
Lecanora bi'uunicu Achar.	639.	Weissia acuta Hedw.	610.
Lecaoora h^ematomma Achar.	G38.	A%eissia curvirosiia StvartM*	CM,
Lee idea alrovirciis pt v. IK Achar.		Sylonia Bistorts? De Cand,	652.
Lccidea caudida Achar.	64a.	Xyloma varium Pers.	653.
Lecidea lurida Achar.	643.	Xylnstrofna ^i^anlfium Tods.	689.
I-mdea luteola Achar.	6fi.	Zygaona gpnufkxum Agardlu	697.
Leotia uligiaosa Pers.	685.	ZygBema uilidnui Agardh.	698.





(?oi. Tyropndinn annotinnm TAnn.

Lycopodium >nrM[M-tif.ifiitra Tie Cand. Ft. gtJL n.' 141.

In sylvii eiWiiorilm Balhni Sniff tun's Otni, i, (iii: mUimit, {liothfrtt}). Estate.

602. *Polypodium rhaeticum* Vill. *VoraZ' bat.* /> 12.
Polypodium alpestre Hoppe. An *Polypodium rhaeticum* L. *trui f*
In summis Vogesorum praeceptis herb. *Idia.* /Lsiutc.






Co3. *Aspidinw monianum Sivartt Syn. IVic. p. 61.*

*Polypodium nioniafium Hitnk**

In tvtia Jurasri. *Estate.*



604. Strullntipieris Rermanica *Villd. Sp. pl. 5. p. 288.*

Osmunda struthiopteris Linn.

et 1810 in Vnfgw Imnslju, tibi nuoc Jropf *Kfirriian*
ac in v:ifjibiis circa *Darram* luxuriat- huiu fruttiteu *Kro* »uti»inio matu Wit.

605. Phaeocephala axillaris Dicks. Crypt., fas. i. tab. i. f. 3.

Phascum nitidum Boifw.

Ad (erram plarrosam in Vogesi* inferioribus p * * * l * irta Bipani*** AutuniDO.

606. *Pbascum curvicollinn* *Eedvf. Stirp. Crypt, i. tab. II.*
Tn Uzi-ia lEmow circa *ArgentoraUtm.* Vcre.



607. *Gymnostomum fasciculare* Bed**.

Brynn fwrinnitr" Dicxs-

In »gns «buk«i ci*c* *Beifortum* ^{ac Lunævillam.} Aprili Maioque.

"JjR^

608. *Omnostomum microstoreum* *Tlcdw. Sfirp. Crypt. 3. tab. 3o. B.*
AJ tunaitj lulosam in sylvis, pratis, borlorumqmc aniltulacr^. BUrtio fit April*.



609. *Equetypa ciliata* Hedw., *Stirp. Crypt.* 1, tab. 11.
Hymenotrichum oxliictorium b, Linn.
fn Vogesi* *upertotibu* ad rupes *Falkenstein* et ad *cu* *Stitlonii* *tie* *Servitiie*^ a?staie.





Cio. Wehm wuia *Hedw. Stirp. Crjpt. 3. tab. 33.*

Biyum :» iiiiirn *DU.tfs<*

Ad rnpts mariidas Togosorum pr.T«rtitn aqua: salius ifr fiflftfcw •> SaJfenS A ^ TM " K, Juitio Jal

6 u. Weissia curvirostra Swartz Muse, frond Suoc. /> 25.
larjiim ctirvhjstmm Dicks. Weis^n nrttirvirosld Redw. Grimmia curvirbsira Schnuf,
la unibroMi ad imam ei L.i.k< ME- Bfhr* !<>; imtu* Vo-sis inferiorib <<'rea BiyotUem,
Estave ac autumuo.





612. *Difymotfon rigid at atn Hediv. Sttrp. Crrpt. 3. !nlu ^*
la liuiis Jiuti'pii; ct CAuiiLni siJtce» circa *Bipontem*, aulumn'/: it *hy&ne.*

ill

43. liarbula rigida JTedw. Stir p. Gtypt, u tab. 25.

ljt-jum Jlcclatuin Schreb. "

-AJ termm lituvsoia ciica jfi gentoratum. Autumnno.



m

Gi.f. Dicranum tnonlaoum *ffedw. Sp. Muse. p. ifi- tab. 35.*

In *jlvi* nwnUHi. ad truncos putridos, astate sed rar ^i me r i f erum. *



615. *Dicranum cerviculatum* Hedw. Stirp. Crypt' 3. tab. 37. A,


Bryum cerviculatum Dicks.

la toiffaccia JIJMSI tt in VogC>is iufftHoribu* proji* tforahurgam, æstate.

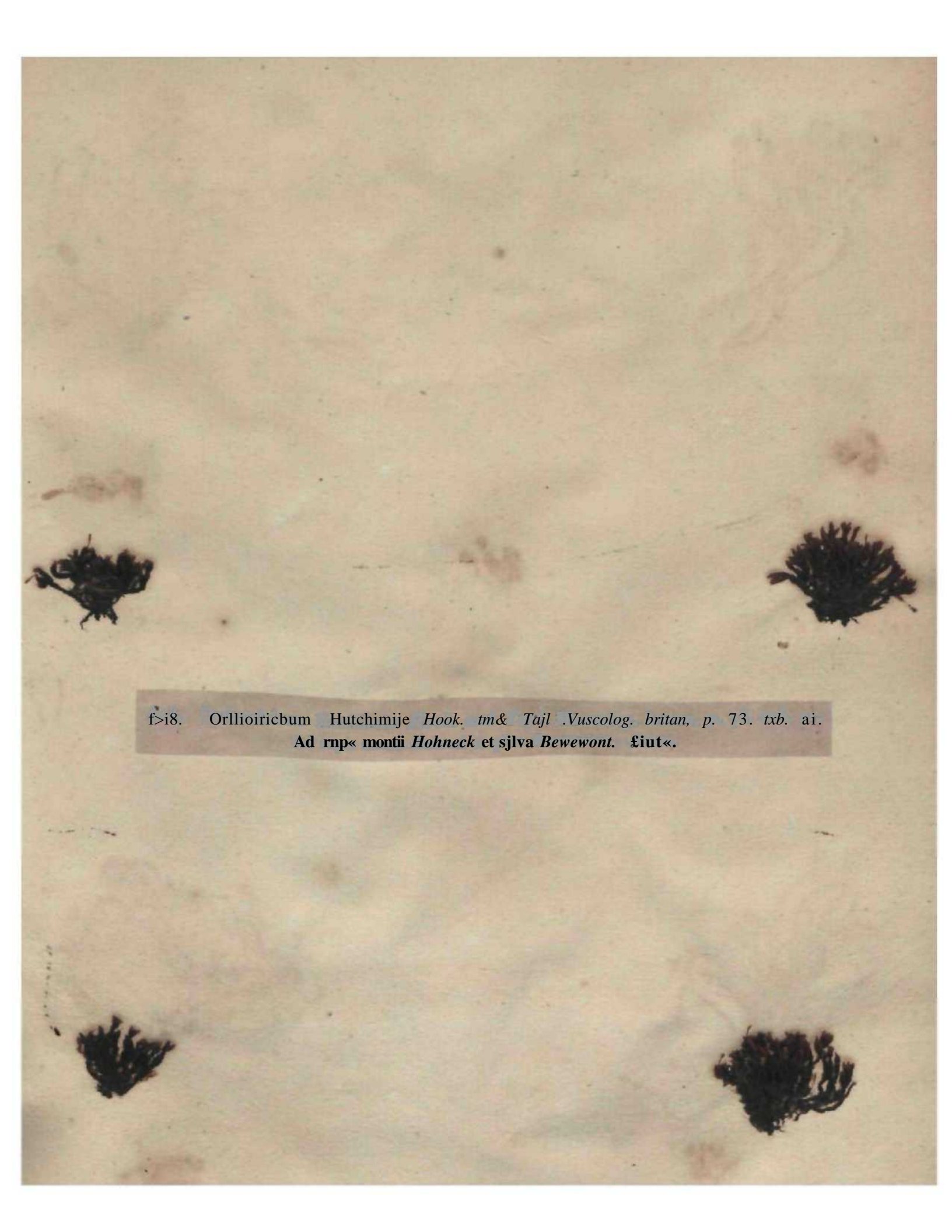


C16. Orilietricium *Sehrad, ejc F/eJu\ Sp. Muse. SuppL a. p. i^, t. 5o.*
JJI iruntis Suiicuin PopuJoruoi que circa *Bmj-crium*, veic led raro cum iht-ciii





617. *Orthotrichum Ludwigii* Brid. *Muscolog. Suppl.* 2. p. 6.
At arboruin truncos cum Or*, crapo, in sylvis abiegnis, vere ac æstate.



f>i8. Orllioiricum Hutchimije Hook. *tm& Tajl .Vuscolog. britan, p. 73. txb. ai.*
Ad rnp« montii Hohneck et sjlva Bewewont. £iut«.



6£)• *Othotrichum Lyeilii* /fooh. and TajU ftfuscohg. britan. p. ^0. tab. 22.
Ad truncos arborum in sylvis et campis. Æstate sed rarius fructiferum.

*Goo. Brj'um andrognum Hedw. Sp, Muse p- 7^>, Jlnium awArognum Linn, GyntiOCepiaius audrogyflus ?i*cAiiri(. Ap mpw Unninujtip ivK.uuin, raiiii iVuLUFvniTi iu PjS<wJ-i d i eVua jo occidttiuli Gailij vete primo reporiuu**



^M



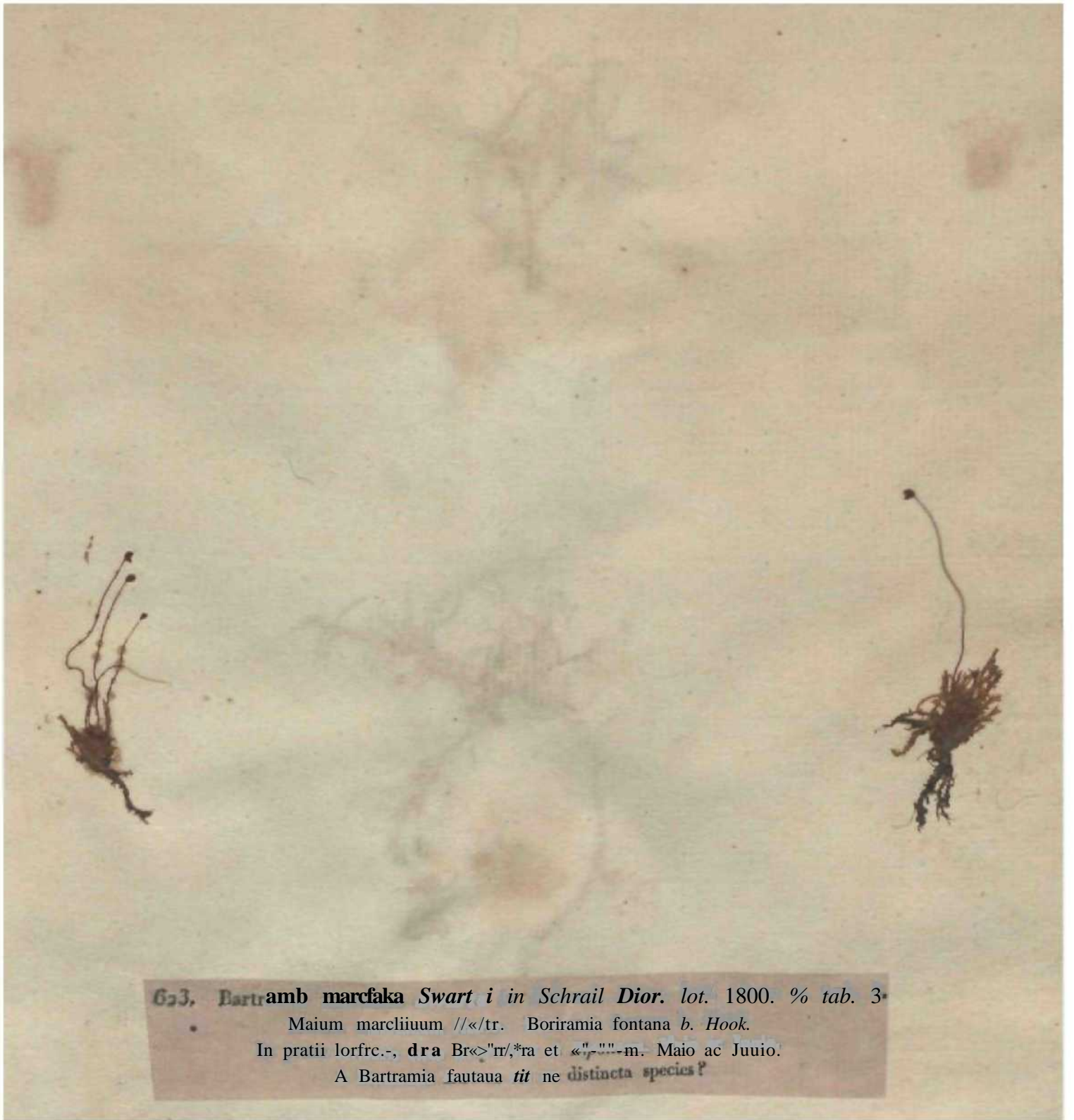
6ai. *Bryum cuspidatum* Schreb. Ups* P> 84*
Mnium stupicicolum aW*. M^{FM}en serj *Ulifolium t. Jun*⁷².
In pratis « *jlvii humidis. Vere.



622. *Bartramia idyphylla* Britl. *Muscolog.* 2. pars 3. p. 132. tab. 1. f. 6.

Bartramia pomiformis Swartz.
Ad terram et rupes in sylvis et locis montosis. Vere ac aestate.





623. *Bartramia marckiana* Swartz in Schrank *Dior.* lot. 1800. % tab. 3.

Maium marckianum // </tr> *Borirama fontana* b. Hook.

In pratibus forfic., *dra* Br<>"m/*ra et <"-m. Maio ac Junio.

A *Bartramia fontana* *tit* ne *distincta species?*



624. *Hypnum piliferum* Schreb. *Lips.* p. 91.
Hypnum *Laogjutkii* De Caad. *FL* /; coll. n. 3-ft. « AWP- /•• 234.
ID sjlvU umbrosis circa Brujeriwn el in Vogesis inferioribus prope *Kayserslautern.* Vere.

6a5, Ifvnum flnviatile Swarts ejc T/cdw. Sp. Musc. p. 277. tab. 71. f. 4.
Hypnum fallx el II. V., 1i_s dtiM Brit! *x Sekwtegr_t in 8*&>> ^ Musc. Suppl *• F. 263.
Ad s^ia in fluviit Jut-mi Vogesormmiue iftimoruui. i*tatc.





626, *Hypnum Menziesii* Linn.
Jji rupibus madidii ad rupa* rivulcruin Jmaai. Vere »c *estato.*



627. *Hypnum dimorphum* Brid *Muscolog. fuppl* *. p. »4h^{ct} Su_rP^U 4- P* 165.

Äcl icrram in Juroso, vciv.

6a8. Hj-poiim tycojKulioUics *BrUh Mttsch'og. Suppl. n. p. 337.*

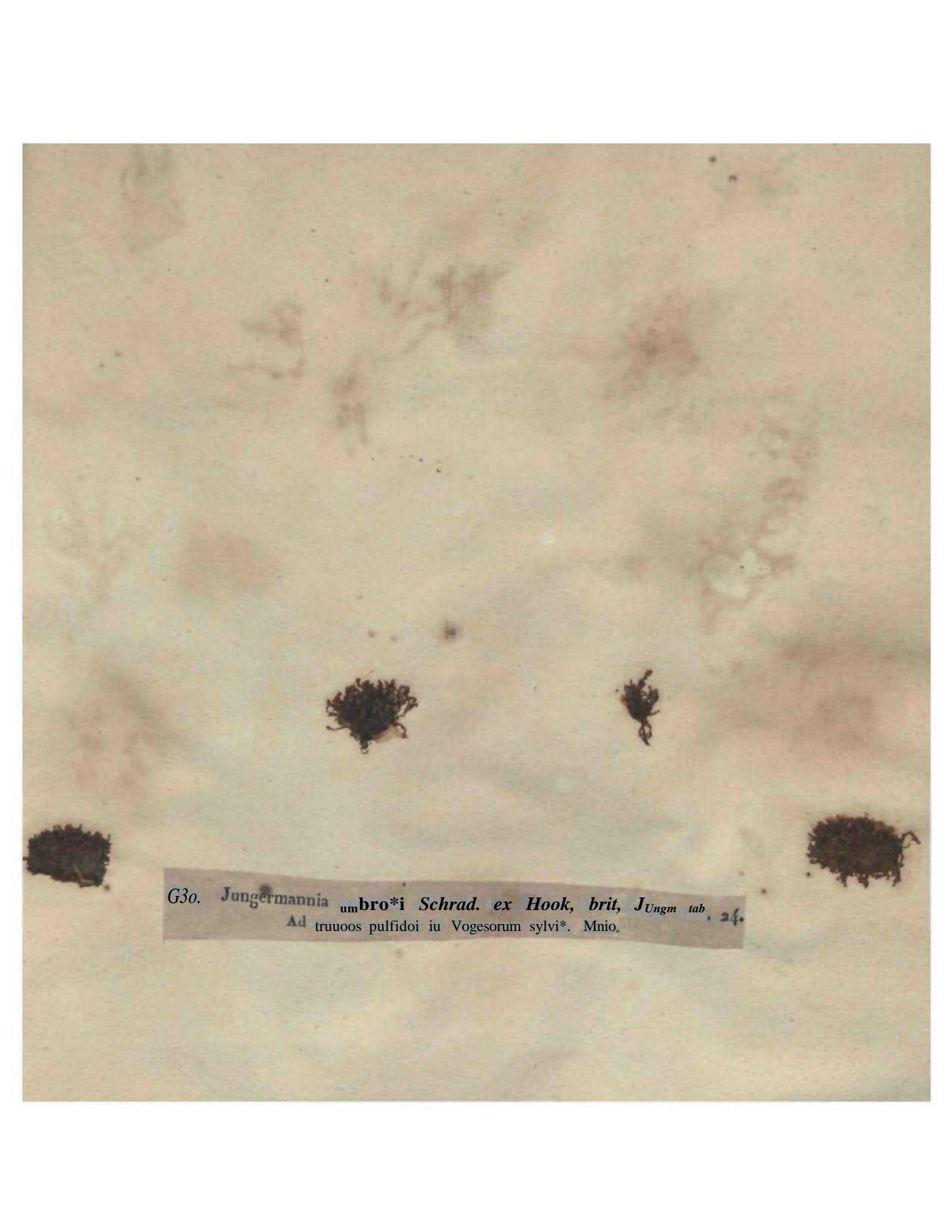
Hypnum rugmim *Web. et Mohr*, *Hypnum* *diaslrophyHum* *DrOmd. Fl.gail. **" 13JB *et Siippl. 231.*
Jn *paladiboi* *Juras>i*, *vaqtMt* *pratis* [ori'actj] *VogL-soiucn iuliniorum.*





perianthia

629. Juugermaonia **Sptagn**J Divks^x Hook. brtr. Jung. tab. 33. ec Snppl. ' 2.
It. pdo&Mii Vogoiomm inter Siagna, restate.



G30. *Jungermannia umbro*ⁱ Schrad. ex Hook, brit, Jungm tab*, 24.
Ad truuoos pulfidoi iu Vogesorum sylvi*. Mnio.



031. *Jungermannia resupinata* Linn, *CJC Hook brit. Jang. tab. a3*
4d ten-am praserUm in humidis *aeuvibusque* Iocs ..p.cnLnonalibu, *Ballonii de Servance.* Junf..

632. *Junggermannia stipulacea* Hook. *brill. Jung. tab. 41.*
Ad lapides in sylva Beaurmont et circa Retourneux. Maio.

633* *Peliidea polydactyla* Achar. *Licet** URBR. p. 519.
Lichen *polydactylus* Peck, *P^hrgwa palydactjit* /> *tii/jrf. FL gall, n."* not.
AJ Iattij-i5 terrauiruc in aylvis.



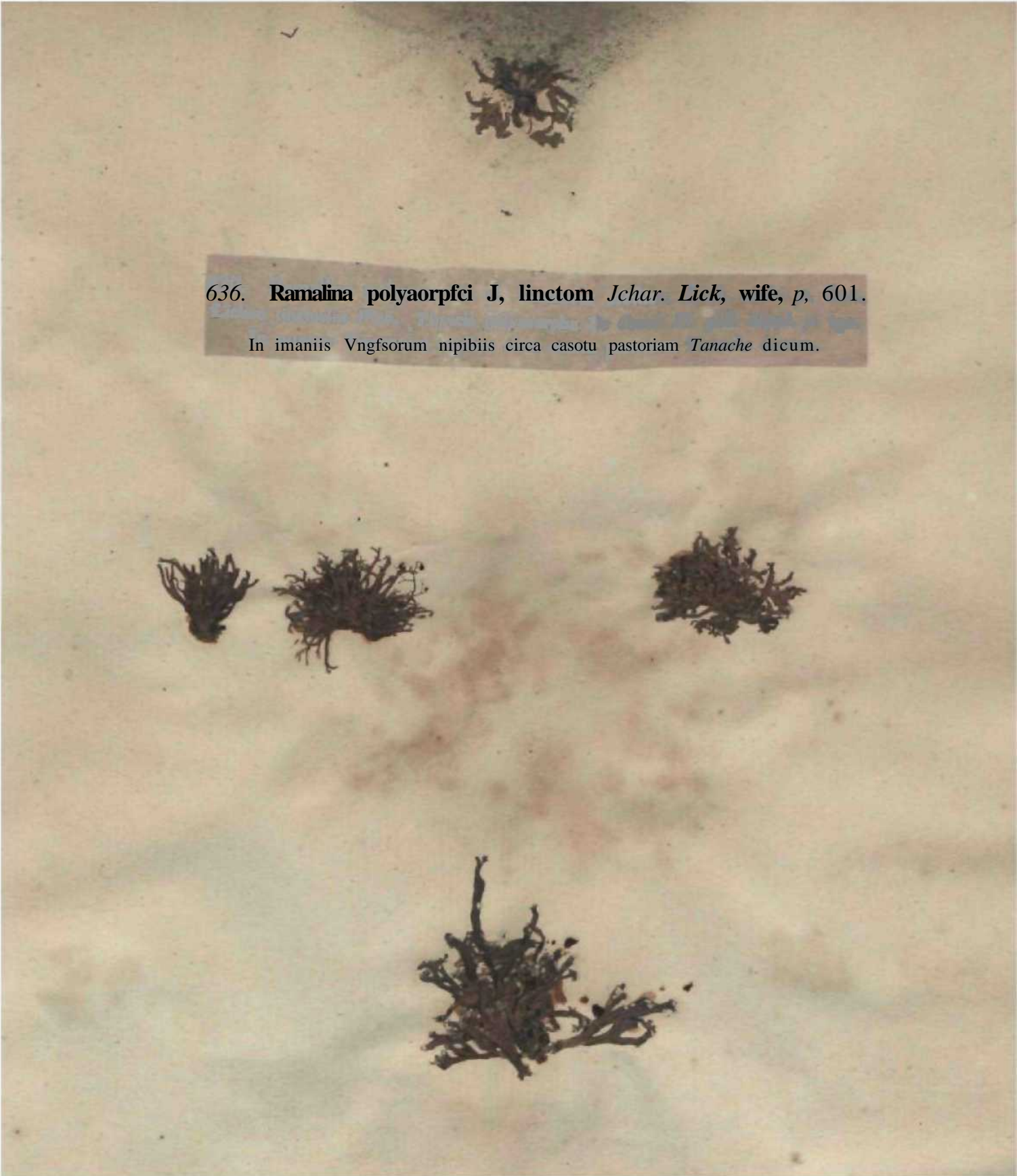
634. *Parmelia Borterei* Turn. ex Achar. Lich. univ. p. 461.
Ad corticem arborum raro circa *Bryozonium* sed frequens in Gallia occidentali.





035. *Parmelia speciosa* Jchar. *Licit. uni.* p. ^^
gall. n.º 1046*.
AJ Fsiyi Acvristjuc truncos montis Hohneck.





636. **Ramalina polyarporfci** J, linctom *Jchar. Lick, wife, p, 601.*

In imaniis Vngfsorum nipibiis circa casotu pastoriam *Tanache* dicum.

637. *Collema scotinum* a. Achar. *Lich. univ.* p. 651.
Lichen scotinus Achar.
In locis campestribus murisque antiquis, terrae et muscis adnatum.

no. 637. non *Collema scotinum* Achar
sed *Collema lacerum* a. puberulum.

638. Lefcäjiora Ijaemtiomma Jchar. Syn- *L^{icflr} P'* 178,
Lichen barniatoni_{ma} Ehrh* Pntcllrfa lia-mai«innia V* Ctm!, 1L B all. n." 961.
In catilibus Vogfisorum silkeis.

m



639. *Lecanora brunnea* Achar. *Syn. Lich.* p. 193.


Lichen brunneus Swartz. *Lichen pezizoides* Web. *Patellaria brunnea* De Cand. *Fl. gall.* n.º 946.

Ad terram rupesque madidas in locis montosis.

641. *Lecidea* *luteola* *Achar. Syn. Lich. p. 41.*
Lichen luleolm *Skriuf* *Patellaria rubella* *De Cand. Fl. gall. n.º 965.*
In arborum cortice.

&ja. L^riflea Candida Achar* Liclu nnif. p- 213. |
lichen candid us if-,h. Psora cawdida D* i'ttwh Ft. ga&- "-* 1001-
Ad terrain rtipf^ijut vailis **Btrta Jm** assi.

V.



643. *Lecidea lurida* Ach'tur. Sjrn. tick. p. 5t,
Licben IUTHIII* Achar. *Psora lurida* De Cand. FT, gait, n.* 1003.
Ad rupes s[er]ra torram in Jurasso Vi>g<uque inferiorihui.



644. *Cenomyce verticillata* Flörke in Litt. — Achar. Syn. Lich. p. 251.
Lichen prolifer Lam. Scyphophorus pyxidatus b. De Cand. Fl. gall. n° 916.
Ad terram in Vogesorum ericetis.





645. *Cenomyce sparassa* Flörke in Litt. — *Achar. Syn. Lich. p. 273.*
Lichen squamulosus Schrad. *Lichen caespitosus* Lam.
I. arborum trunci patridis at supra terram in ericetis.



646. *Comicium* tM *Achar. Syn. Lich. p. 299.*

Lichen tristis Linn. f.

Ad Tpgewnun » » gnnit^ pnaerlim iu »OH» *Hohneck et Ballonio Sulzensi.*




647. Stereocaulon nantiro Jchar. Lick* uttiv. p. 582.



LJcKea namti Achar.

Ail tfrncu in Vogesis inferioribus.





648. *Opegrapha ruhda* Pers. in *Ust. Jntt* d. Hot, St. 7. p. 31.*
Lichen niboUus Achar, *Opegrvpha rtibplJ** *Da/bur Jour. phys. 1818.*
In conict \biells. *pectinata.*



64g. Opegrapha atra Pers. in Use, Ann. ih Sot. St
lichen denigratus Jcar. Opegrapha* •»« Dufm, r Jour. /j/ V* ^* 30*
Ad ctwicem Piidi, Rumni aliani mque ai Wram. " 1818.

no. 64g Opegrapha atra et eadem
species ac Opegrapha denigrata
Pac. V. no 469.

65°. Graph* Krifita Jchar. Lich. KIV, p. 265.
Lich.* Knpius EfaK. Opegnpha script* Dufour Jour, ph.s. 1818.
In corlic* Jtini. n ^ 1. Uki* Aquifolii ceterarumque arborum.



651. *Spiloma tumidulum* Achar, *Syn. Lich. p. 1.*
Coniocarpon cinnabarinum De Cand. *Fl. gall. n.º 880.*

In cortice Carpini, Fagi & Abietis excelsæ raro in Vogesis at vulgare in Gallia occidentali.

653. *Xyloma varium* Pers. in Litt.
In culmo arido Junci effusi, vere.
Ad genus *Leptostroma* Fries attinet, an *Lept. xylomoides* Fries?

Leptostroma juncinum Fries Myc. myc. 2. 70. 598.





654. *Hysterium mdaieacva* Fries *Obs. myc. t. p.* 192. *tab. 2. f. 1.*
In (iiliii Vjccinii Vilis idajc cmurlins, to to Anno.

655. *Hjstemim amndimreum Pers. Sjn. Fung. p. XXVIII.*
Hypoderma amndj.mccam De Vand, FL Ell Suppl. p. 56.
Ad culm_M aridos Aauidjiia Phraguijij, voic.



656i Hj-AterJum abietinum Pers. Sjnrū Fung, p, 101,
Oppgrapha panfleta Acimr. Lick. univ. ft. a53.

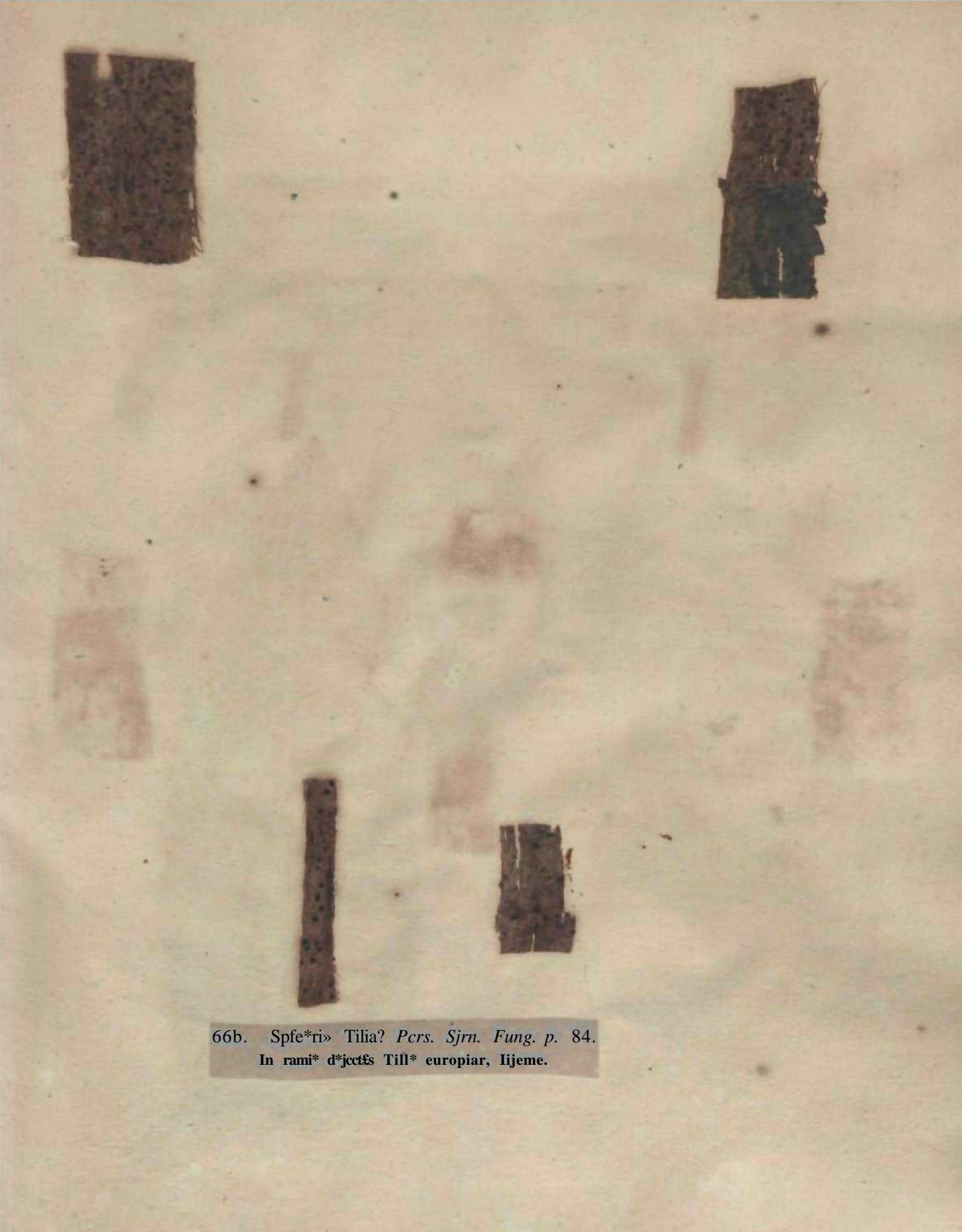
Ad lignum emortuum Abictij eiwitaf-C' **pectinaM** tlecorticatum, i_n montosis.
Nec 1 Jjstt'rinm, net Opigraph* , std cujui generis, dubitamus.

C57. Actynoiyriim grarainia *S,hm. ft. Kunz. & euts. Schw. 8. n.º. 183.*
In cujmis _{cl} folij, Melicæ caruleæ, primo vere.

• TJ



In foliis 6' > 8, Asieroma Polygonati De Cam}. Ft. «nl}. Suppt p- 163.
rmii C J l
emormii CouvaJlariae muJtiJW* promiscue cum Sph. reticuJata D. C. Autumno ei Hyeme.



66b. Spfe*ri» Tilia? *Pers. Sjr. Fung. p. 84.*
In rami* d*jct&s Till* europiar, Iijeme.

661. *SpTiscita macnliformis* Pen., *Sjn. Fung, p, go-*
In loJiii i-xsiccati Qocrcui, Fiigi, CasUacje, pri'mo venr.*





G6i. Sphnria panrtjVbrmia Pers. Srrt. Fung. p. 90.
fn Iblil's ij u l'IC in is enioitui?, auLumno.



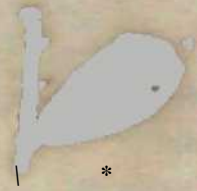
633. *Sphaeria Lichenoides* var. *e.* *Hederæcola* De Cand. *Fl. gall. Suppl.* 1. p. 147.
Sphaeria hyalina Pers. in Litt.
In foliis adhuc viventibus *Hederæ Helicis*, toto anno.
Ad subgenus *Phyllosticta* Pers. *Trait. sur les Champ. comest.* p. 147 pertinet hæc varietas,
sed non ad *Sphaerium punctiformem* var. *b.* *Hederæ* Pers. *Syn. Fung.* p. 90.



064. *Sphaerit Spittii* Nees in *Sclim u. Kunz, Detts. Schw. Q. n.* 178.*
JH [imi] «xMcciti» Spardi icoparji, v«nj.

665. *Sphaeria accumulata* Pers* in Litt.
in run Him, ~~fluorescentbol~~ *Vaccinii* Vitis idjj.-. Autumni.
Aifi»i* *Sphaeria aciitosa*: Batsch Eiench. t'ung- tab. 3*./ 173.

Sphaeria Vaccinii Sowerb.



666. *Sptaeria trichina* Pers, in Lilt.
In QUCTSU* ligno putrido. Æstate.

667. *Solaria palina Pers. in Lift,*
Ad ram as emortuos Pruni Padi, vero

Cenandium Cerassi s^o Padi hinc systeme 2. p. 180.



668. Sphaeria Lirella Pers. in Litt. *Sphaeria* Aeneas. Jung. 2. p. 125.
In caulibus aridis Spirææ Ulmaricæ, primo vere.

6ffQ. *Asterosporium Hoflmanoi* *Künze in Regwib. bot. Zeit, 1810. n.* i54*
Stilbospora aslerosperma *Boffin. FL germ. 3. tab. i3, f. 3.*
In muili exsiccati Fagi sylvaticae. Vere.

J

670, *Melaconium' betuliutim* Schm. «. *Kim**. *Dents. Schw*, §, n.⁹ aog.
SUBospora hetulina *Pert, in Lin.*
Yen: ad corlicem \iciaix all>к **pncc«dea]** autumnno casae.

671P Scleroglossum lanceolatum Pers. in Litt. *A Myc. europ. Tab. *i-fiv.*

Cfflv.iria hi-ilarum Pen. Srn. Fung. p. 605.

In onibus ariilis hnbarum uiajorum ad sepa, *rem*,

Nomini generico Xyloglossum Pers. Champ. comest. p. 144 substituit cil, auctor Scleroglossum.

672. Scleroglossum conicum Pers. in Litt. et mycol. rar. Tab. XI. f. 5. 6. 7.
Ad caules exsiccatos Sonchi alpini inque caulibus et petiolis Cacaliae albifrontis. Vero.

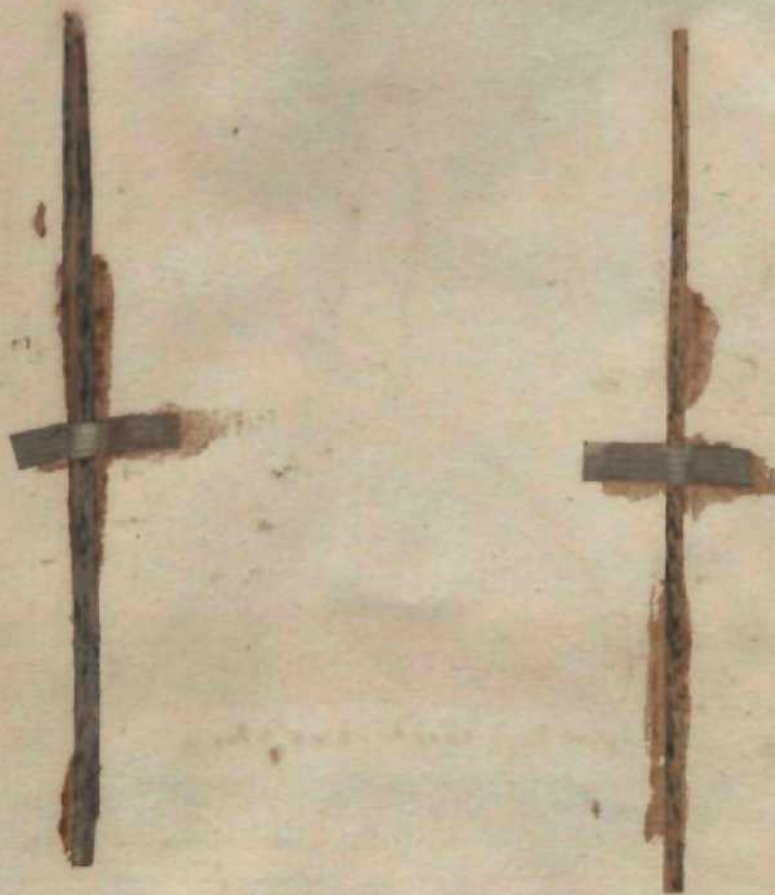
6;3. Sclerotium Pteridis Pers* in Lilt.
In stipitibus Pteridis aquilioa; ac Osmunds regalis. Vere.

Leptostroma filicinum Kries, *Bot. myc.* 2, p. 599.

fi-4- Sderotiran tjiu'dum *Pcrs. in Litt,*
In cauliboi phiDiLuis Aconiti Sapdli, tliartimfQe baternta majorum. Vere,

Leptostroma vulgare Kries *fl. myc. 2. p. 599.*

675. *Puccinia graminis Pers. Sjn. Fituj*, />. 228**
In ctilmis foliitjuc gramJDiiui. Aulumuo.

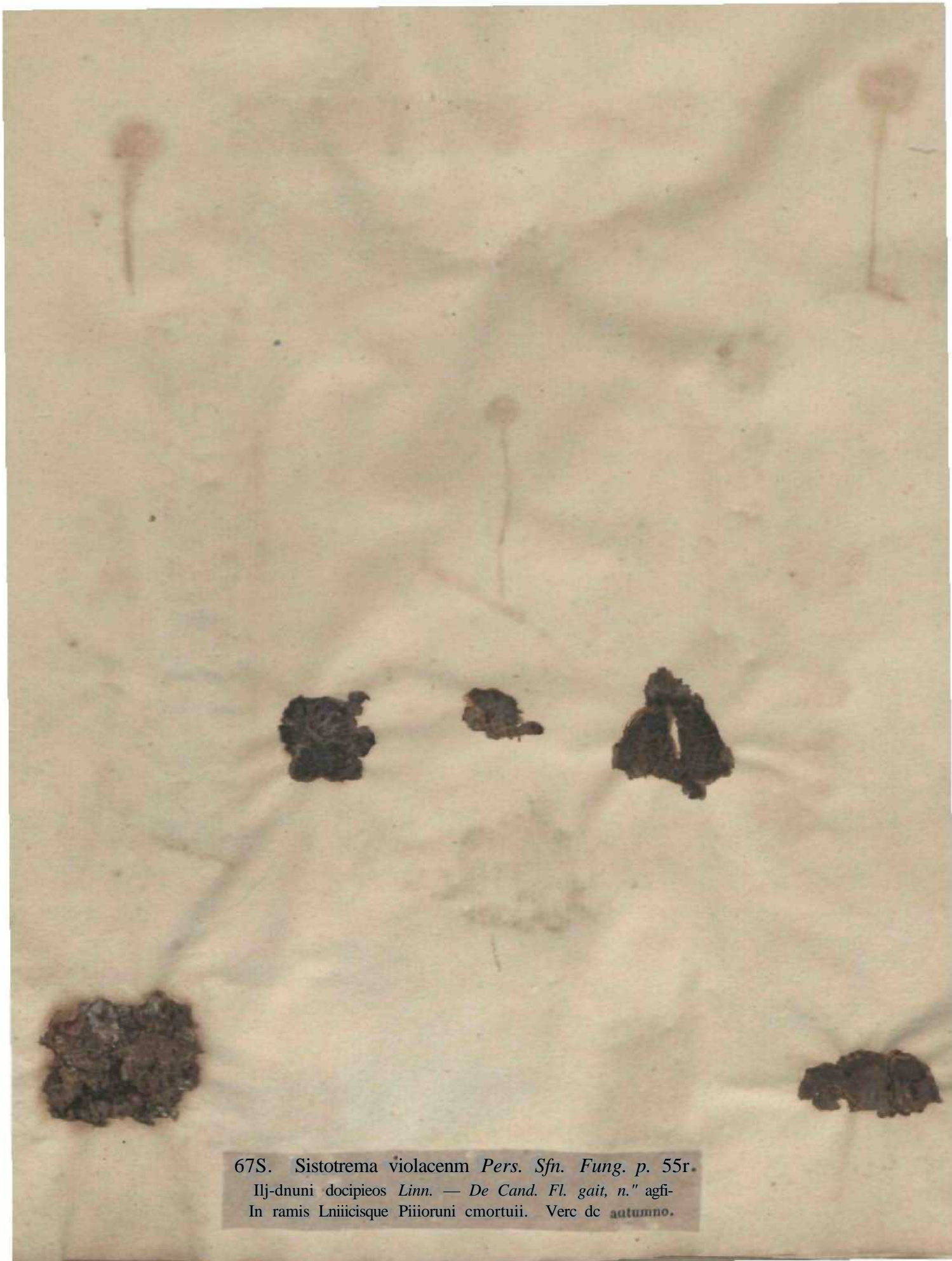




6-G. *Puccinia Buxi* Dc Cand. *Fh gait. Suppl p.* 69.
Ad (blii Buxi wmpcrrirewii in *Junuo*, jE»Ute.

677. *Agaricus androsaceus* Pers. Syn. Fung. p. 468.
In aciculis Abietis pectinatae, per totum fere annum.





67S. *Sistotrema violaceum* Pers. *Sfn. Fung.* p. 55r.

Ilj-dnuni docipieos Linn. — *De Cand. Fl. gait, n.*" agfi-
In ramis Lniicisque Piiioruni cmortuii. Verc dc ~~autumno~~.

6-g. TIWephora <ju«C!na Pers. Sjn. Ftwg. p. 573.
t ThcIeph_{ora} corticalis Dc Cand. Fl. gait' »•* 277.
Ad ramdi dcj«tos Quctu* in sylvi*, v*re*



680. var 2. crassa et thol.
Jf (Vivans) Berl. Mycena, p. 128 **X-fyto. 3. 1.
distincta a Th. frustulata.

C80. *Tielepora frustulati* *Ptr<i> Sjn. Fung, p. 577.*
Ad traLes Qutf«u» vcuistaj moJeaianiiii i poutium, aquis conspersas.

681. *Telephora Pice** Pers. in Litt, *et myc. eur.* p. 129.
Telephora Pini Dc *Cand. Fl. gall. Supp.* 3i. exclus. *Alb.* et *Schw.* *Synon.*
In cortice *Pini Piceæ* Linn. Autumno.



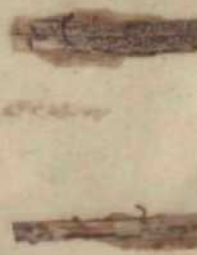


6fta. Oavaria cornea *Pers** *Sjrn. Fung. p. 596.*


In ii-uncii qufrcinis pin&que puttvscentilnij., atilunno.

Ob J<lltCua utrimJinum potiui ad Tceiuc;Uaiu pcliucrc videiur, ex *Pers.* *Litt*





683. *Clavaria obtusa* Sowerb. ex Pers. in Lilt.
Ad cjtulci einoiluos Soucii afpiui in pijt-rupti* Vogesorum. Æstate.





684. *Geoglossum Sphagnorum* Pers. in Litt.
Inter Sphagna in torfaceii circa Gerardmer. Autunno.

Geoglossum glabrum B. pseudotum Bert. myc. eur. «j! gl.





685. *Leotia uliginosa* Pers. *Champ. earnest*, p. 83,
Leotia Ludwigi, Dicksoni et Bulliard *Pers. Syn. Fung.* p. 611-612. *Helvella Bulliardii* De Cand.
Super folia purescentia in locis silvarum utte, Maio Junioque.

685. Peiw AnopjE *Pers. Syn. Fung. p. 69.*
In tiulibus piiiridi₅ **Sonfci afpiui**, CacaJi* alLiioiiii'j, Aconici Wapelli , **ran.**

687. *Peziza cerina* Pers. *Syn. Fung.* p. 651.
Ad truncos et ligna exsiccata in sepibus, autumno ac vere.

6Q8. *Polythirncium IVifolii* Kunz u. Schm. mjrkoL Heft, u /• i3. t. i.y. 8.
• In taVm Trifdi) aiTeusis. Stptembri.





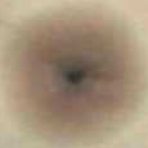
S8j> Xylostroma giganteum Tade Fung, mechtenb, i. p* 3<. f. g, /; 51.

In centio truiKoruin Fu^i luiiguetutiuni in tylvif monKijV.

690. Fungo folionim *Ptrs. in Lilt.*
In foliis Quercus, Corjli', Vsgi **hmm<iue* aihorum, autunjiio.

no 690. *Fumago vagans* myc. eur. p. 9.





69r, Srytonema oocTUtnm *lf»gh. ffydrophyt. p. <y> "•• * & A.*
 Scytonema flj<far«« -/«««ft *•/-«- Confer, oedbt- BOfr. Coofinr. «»Iiw«a Drop*.
 ID mundiLii ^ ""-"i circa Brtg-crium. £ittle>



692. Ectocarpus aureus Ljngb. *ffidrophft** p. 134* tab* 44* D,
Byssus nuren **Aut.** ConfTvs aiirei Wffw. Tu-niepohl n airrs *Martiui*.
A J rum ttindidas, ail niraco) in locia udis, lota anna.
Recens 3UTM wJore t looglnquo coaspicum.





69J. *Conferva rivularis* Linn.
Prolifera rivularis Vauch. CkmtraniJa **rivalarn** De Cantl. Ft, gall. n.º 122.
In IliivJii. et rivulU, aestate.

618. Conferva pnetorum et vnr. b. aquatics Agardh Sjn, dig. p. -ft
Var. a. Coaf- ericelwum Roth, habitar in uWMM t^*mr jniindntis, terrain a^sUL; aliteecqs, nrc non
in I'fic'ti. htuttidil vorc.
Var. J. aquatics ^ i t r. I< c- Conferva aJpina i^r>ffA !* Ciwcit scsiaic jn arjm's ct mundatij ad o ras sylvarum.





695. *Conferva muscicola* W. *Mohr. Reise d. Schwed.* ^' ^ "' " f' %
Conlerva castanea Ddhv.
 Ad terram muscosque id sylvis umbrosis, æstate.

696. *Couferva velinina* Dtilw. *brlu Conf, tab. 77-*

By: nil vplmina Liun.

Ac' terram 110clafn H&UIOMIII vian»m eav»rUn, !D sjlvi^ Xrtttfc
Ectosperma terrestris Vauch Vautberia U-rj-cUri* f W. oon hue ipectat-

697. *Zyguema genuiflex*

Conferva geuuJleia Roth. Conjugata an(ju(ata *Pouch.*

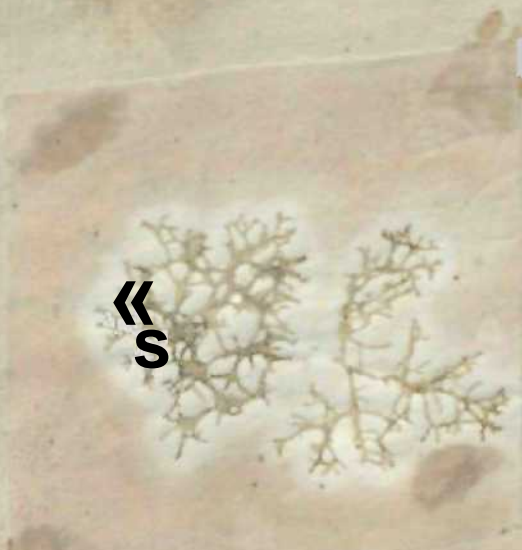
In ajjuis quietis, ven! »c piini* SesUte.





698. *Zygnema nitidum* Agardh Syn. Alg. p. 98.
Conferva nitida Fl. dan. *Conferva jugalis* De Cand. *Conjugata princeps* Vauch.
In aquis stagnantibus, vere.

699. Chætophora cndivi^folia XgarJh Sjn. Jig. p. 127.
Batrachospermum ~~trichomanes~~ ~~trichomanes~~ uds.
In aquis lapidibus adhaerens circa Lunævillam. Æstate.



«
S

r



Nostoc commune *Fruick Hist, des Conf. p. ^3. tab. 16./- I.*

BOOK CARD
Indian Botanic Garden Library
BOTANICAL SURVEY OF INDIA

Cdl No. & j. \$..... A* Kot\9dl:5.....

Author..... Mauger, J. J. & C. W. H.

Title Stirpis cryptogamae Vogeso Mukra-
-ane quas in Rhini superioris...

Name of Borrower/Code No.	Date of Issue	Date of Return

INDIAN BOTANIC GARDEN LIBRARY
BOTANICAL SURVEY OF INDIA

